
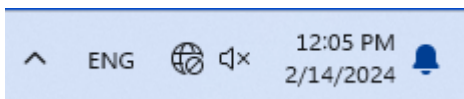


# Guide to connect to KIS\_Staff on Window Machine



On the bottom right of your screen, click on the connection icon  .

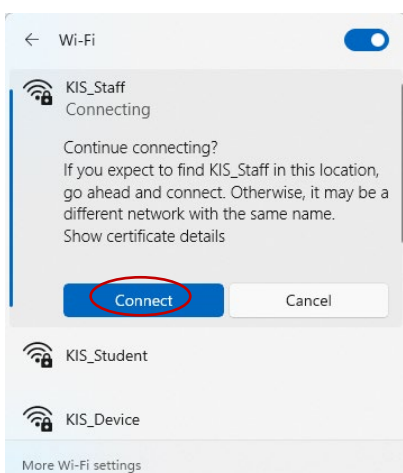
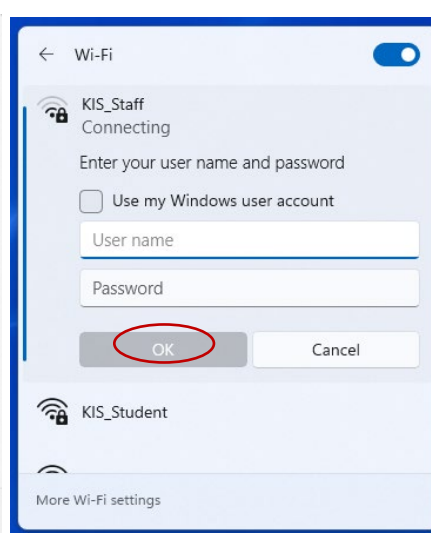
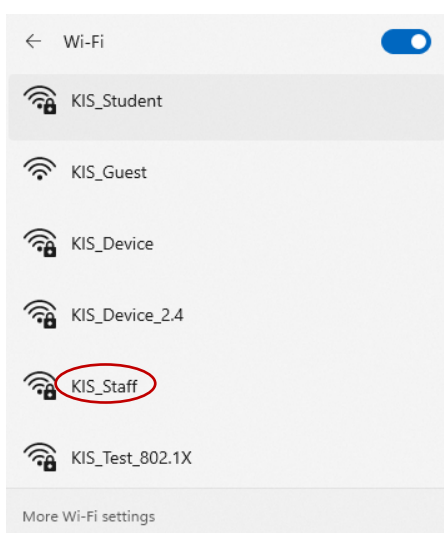
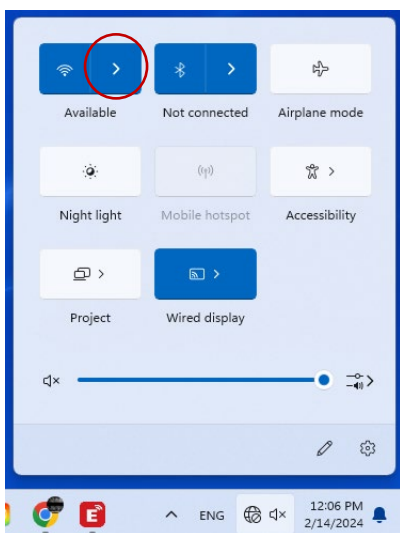


Click the **Available** Icon

Click **“KIS\_Staff”** from the list of available Wi-Fi networks.

Enter Username and Password by referring to the user name and password from the email Subject **“Staff WiFi Password”** that was send on Feb 8<sup>th</sup> from Steve Kiss.

Click **“OK”**



Click **“Connect”**

You should now be successfully connected.

--- End of Guide ---